



THRIVE

MONTGOMERY 2050

Let's Plan Our Future. Together.

www.thrivemontgomery.com

Montgomery Planning

9-8-2020

Thrive Montgomery 2050

Greater Olney Civic Association Presentation

Today's presentation

- Introduction to Plan
- Trends and Challenges
- Planning Framework and Vision
- Key Themes of the Plan
- Next Steps

Introduction-Context-Rationale

Thrive Montgomery 2050 isn't about reinvention. It's about adapting to new realities and shifting the way we think about how the county should grow.

Economic Disruption

Regional + National Competition
Higher Living Cost- High Debt-
Location Preferences

Social Change

Public Health- Social Isolation-
Household Formation- Lifestyle
Changes- Focus on Equity

Demographic Shifts

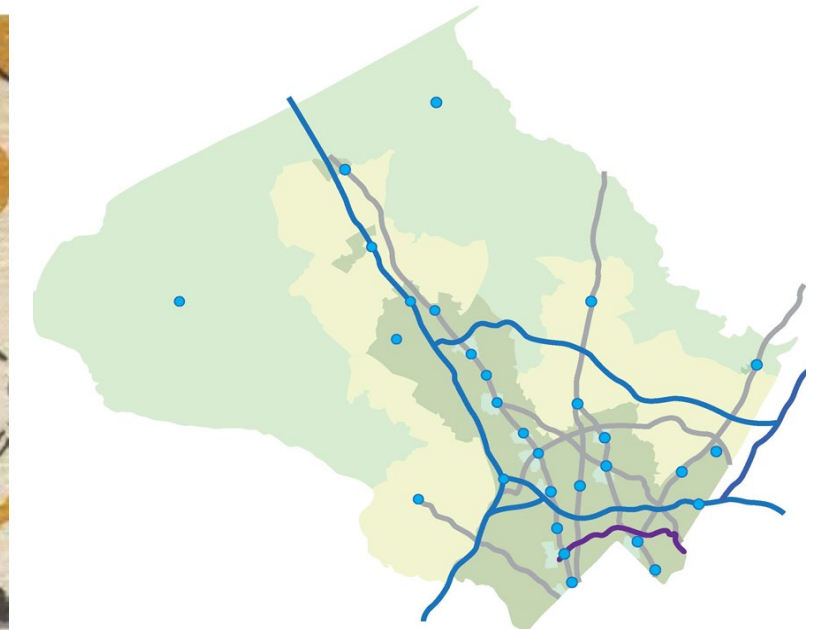
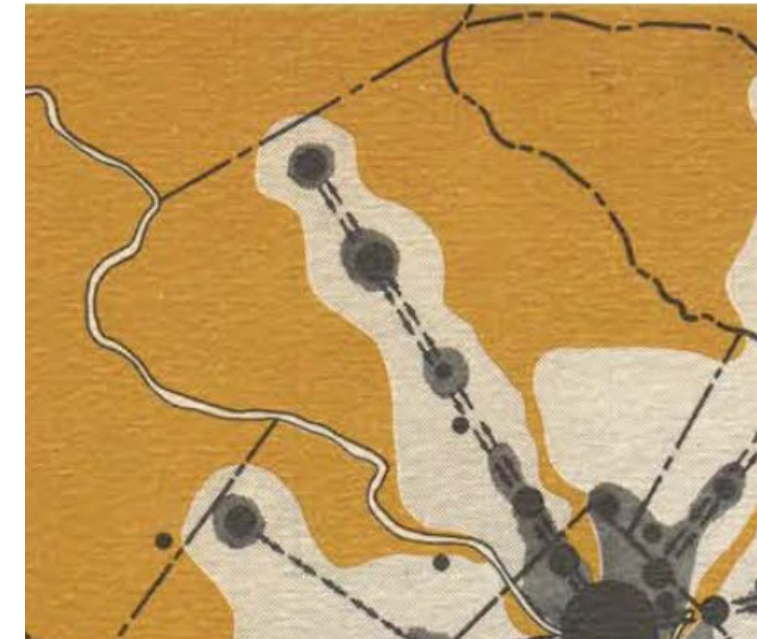
Increasing Diversity- Smaller Family
Size- Decreasing Birth Rates- Aging
Population

Technological Innovations

Artificial Intelligence-
Autonomous Vehicles- Ride
Sharing- Social Media- Online
Retail

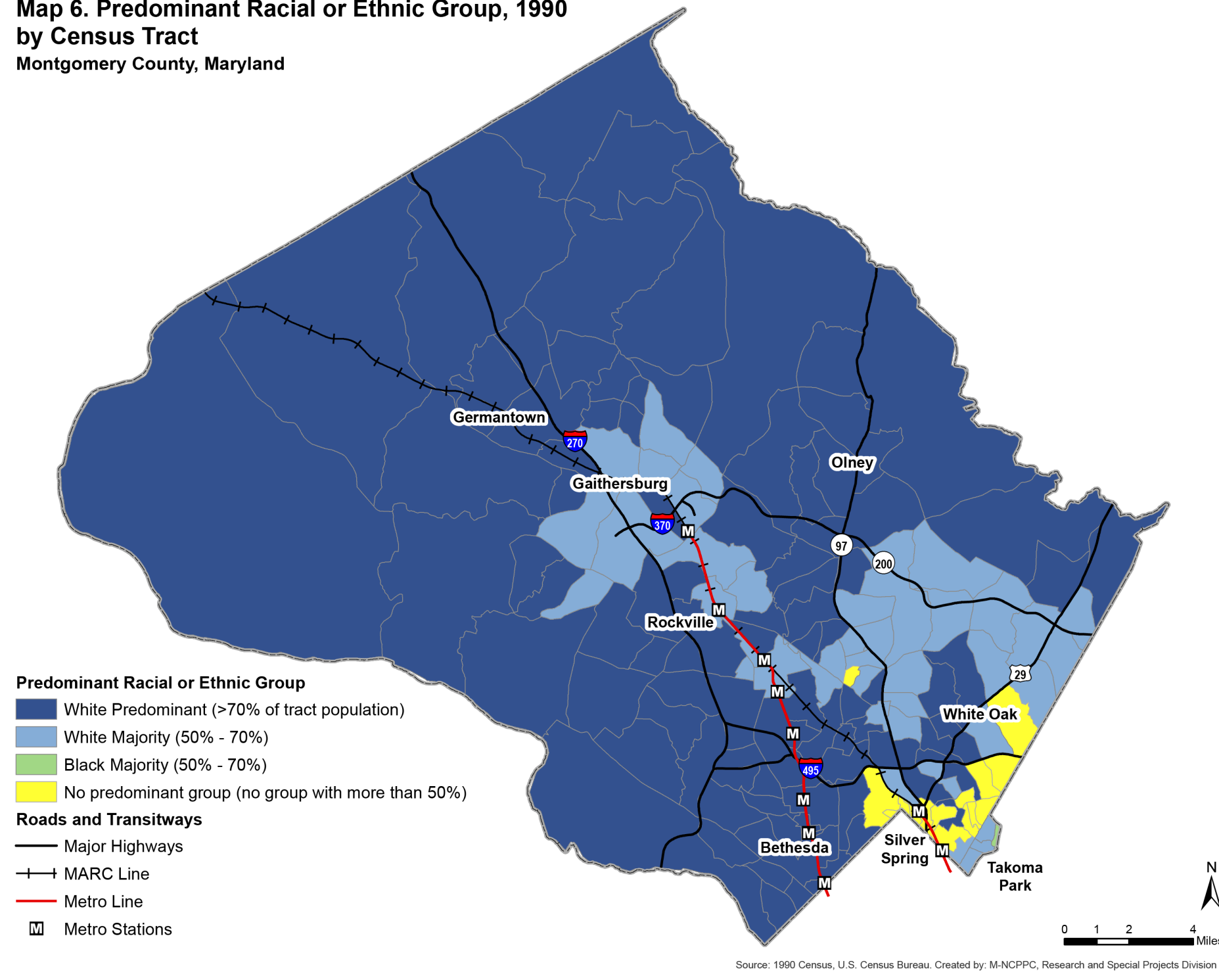
Climate Change

Sea Level Rise- Extreme
Temperatures- Extreme
Weather Events- Habitat and
Natural Resource Impacts
Infrastructure Cost- Energy

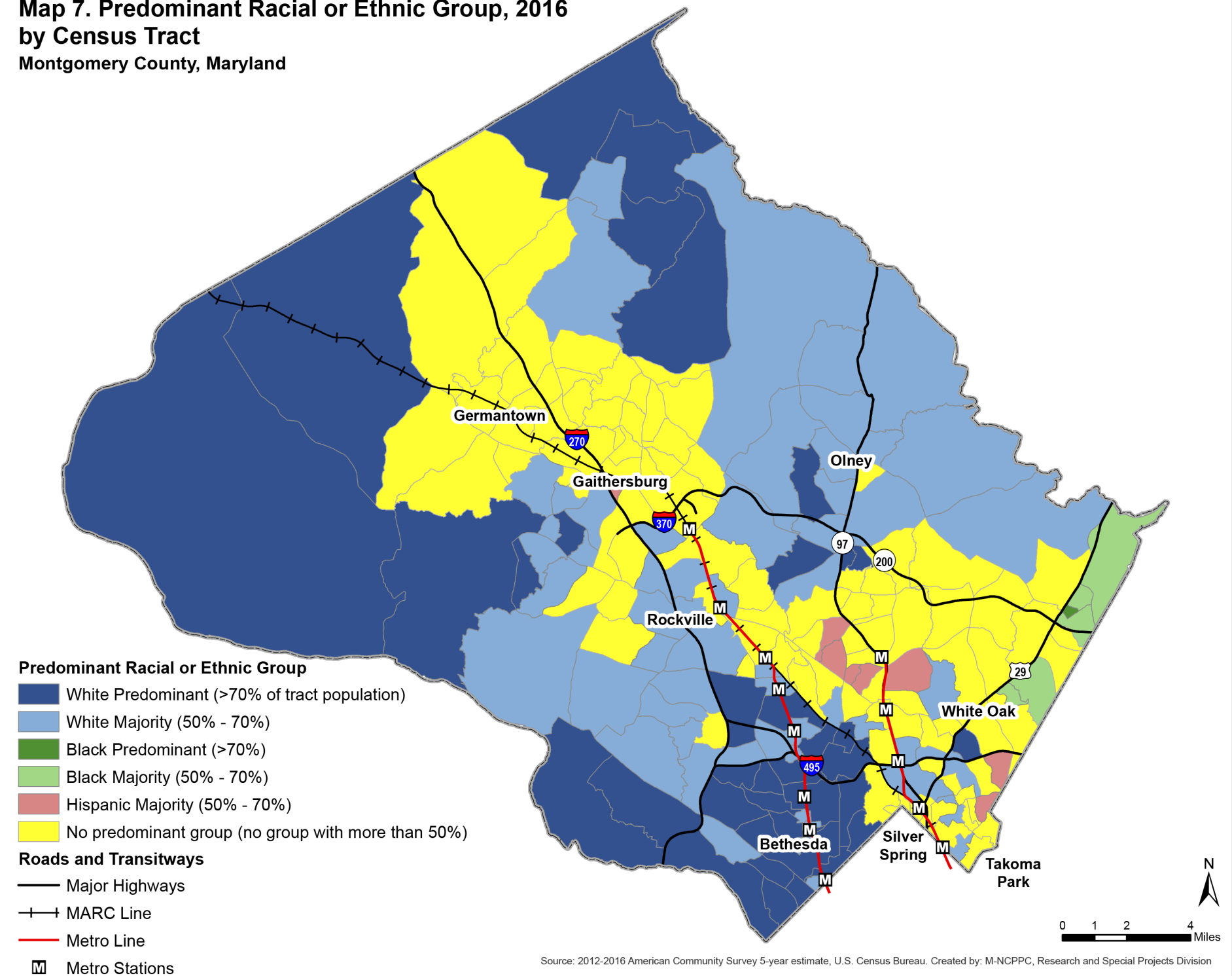


Change in County Demographics

**Map 6. Predominant Racial or Ethnic Group, 1990
by Census Tract
Montgomery County, Maryland**



**Map 7. Predominant Racial or Ethnic Group, 2016
by Census Tract
Montgomery County, Maryland**



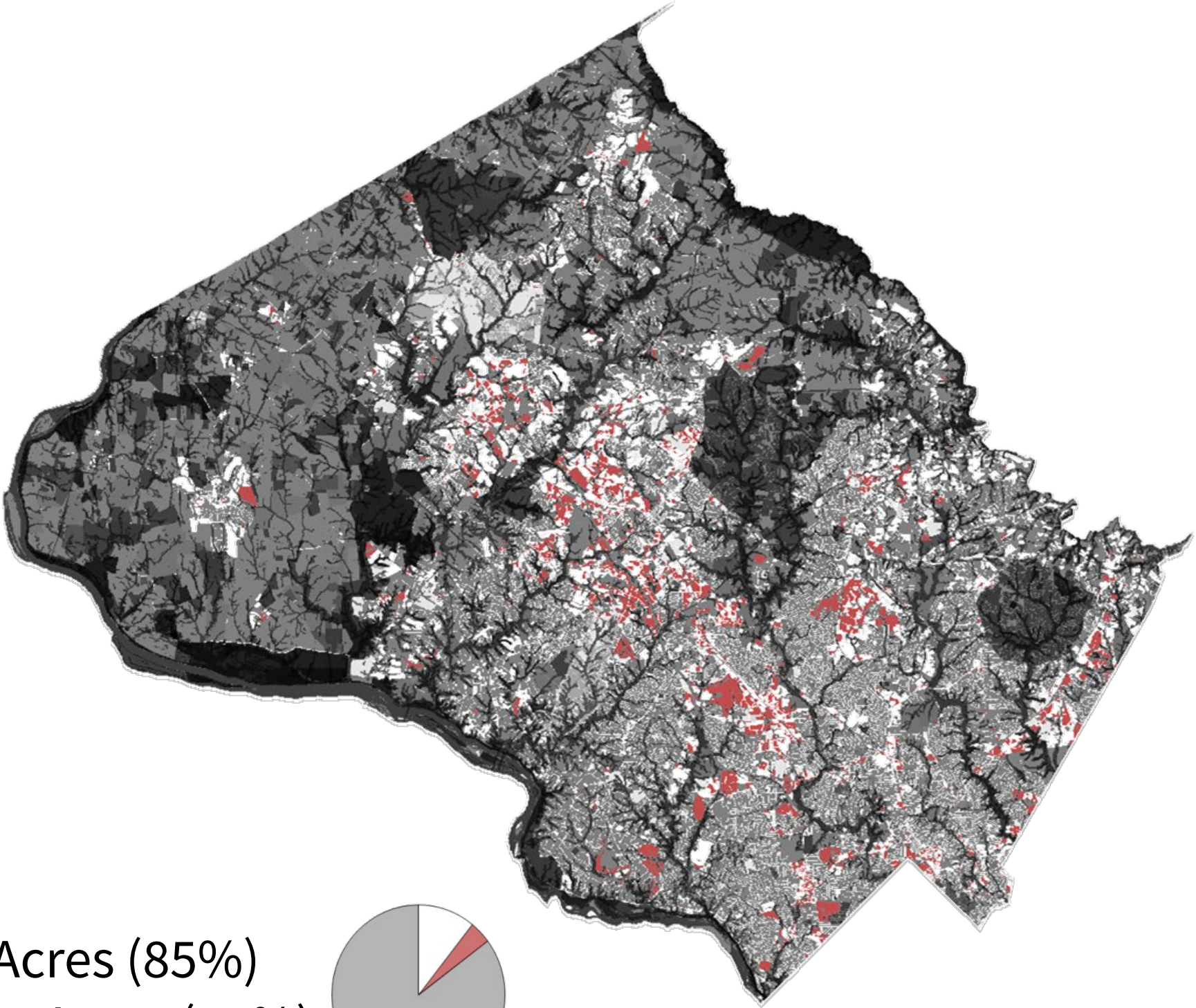
County is mostly built out

Environmental constraints

- Hydrological
 - Streams
 - Wetland Buffers
- Erodible soils
- Parks & Biodiversity areas
- Agricultural Reserves
- Special Protection Areas
- Forest Conservation Easements

Qualifiers

- Multiple owners
- Improvement Value >2 Land Value
- Office Buildings less than 50 years old
- Retail Buildings less than 15 years old



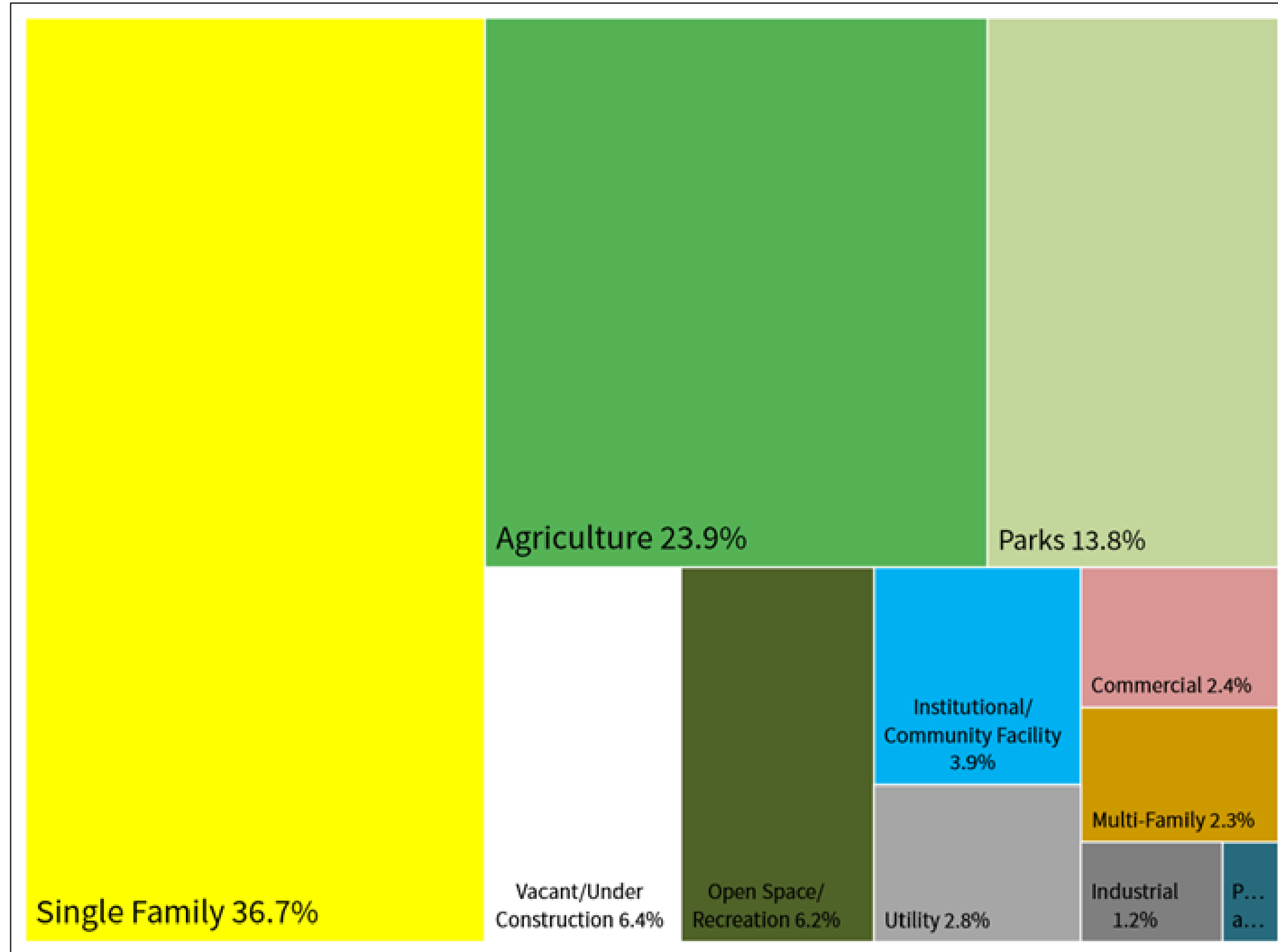
Man-made constraints

- Utility Sites
 - WSSC
 - Transmission Lines
- Transportation Infrastructure
 - Metro
 - Rail
 - State Roads
 - Federal Highways
- Government Ownership
- Rustic Roads & Public Education
- Historic Preservation
- TDR Exhausted
- Rockville Quarry
- Regulated Affordable Housing, Private Institutional
- HOA Common Ownership
- Single Family Dwellings

Constrained area = 276,515 Acres (85%)
Unconstrained area = 47,804 Acres (15%)



Current Land Use





Increasingly Older Population

Percentage of Population by Age Group

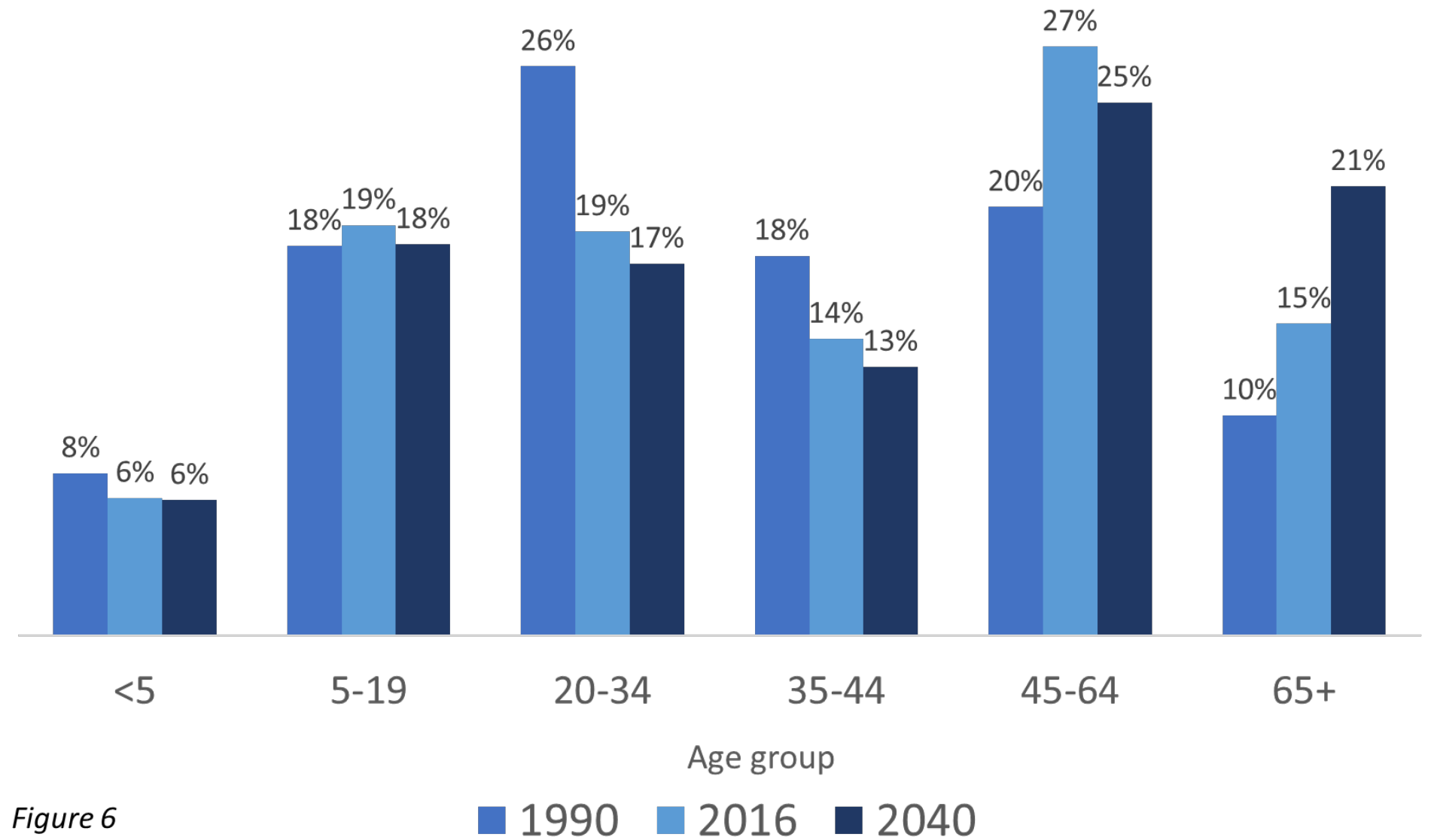
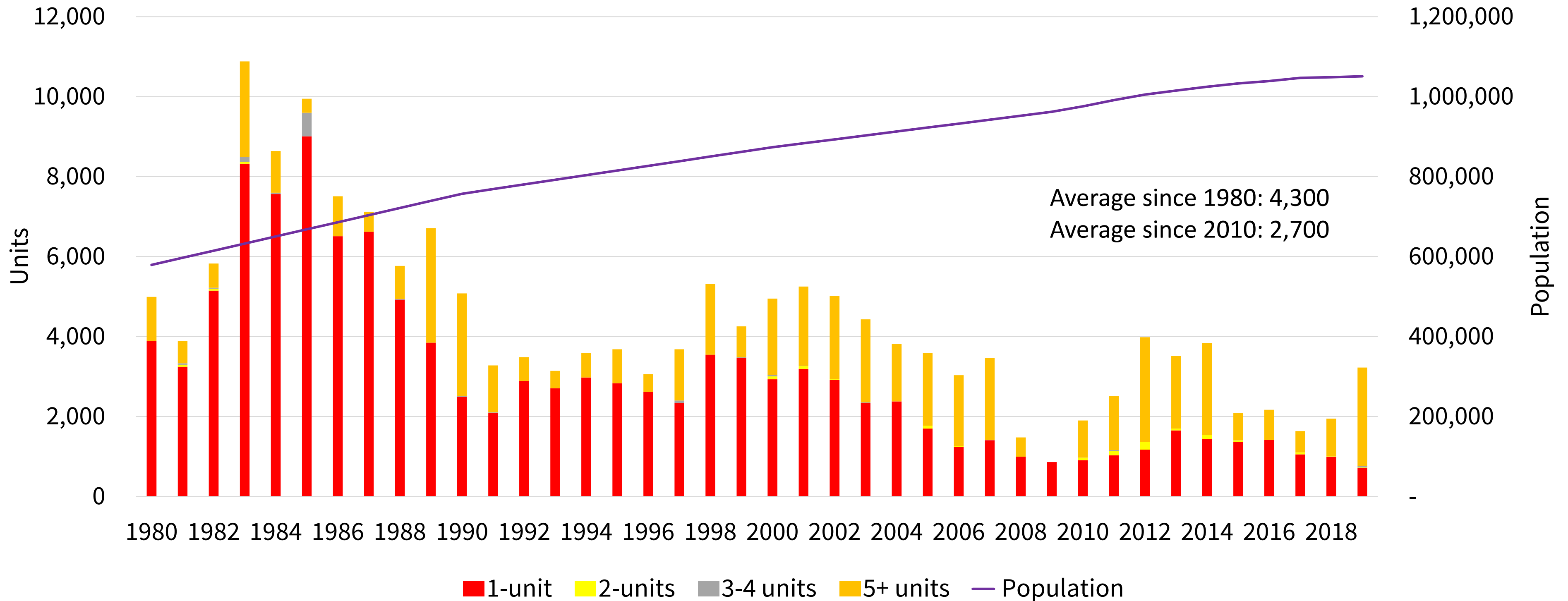


Figure 6

Housing Growth Not Meeting Needs of Growing Population

Montgomery County Building Permits



Source: 1960-2010 US Census, 2016 American Community Survey, 1-year estimate, Census Bureau Building Permits

Other Trends and challenges

- **Sluggish economic growth**
- **More racially and ethnically diverse county**
- **Declining trends in public health and well-being**
- **Stop planning for cars**
- **Need for regional solutions**
- **Climate change threatens all aspects of life**

Planning Framework



Overall Vision

In 2050, Montgomery County is a web of **complete communities** connected by **vibrant corridors**.

- **Complete communities:** Individual and unique neighborhood activity centers with a variety of housing types and price points located close to workplaces, needed goods and services, public amenities and open spaces.
- **Vibrant corridors:** comfortable, safe corridors of multimodal transportation and services; and corridors of connecting green parks, stream valleys and trails.



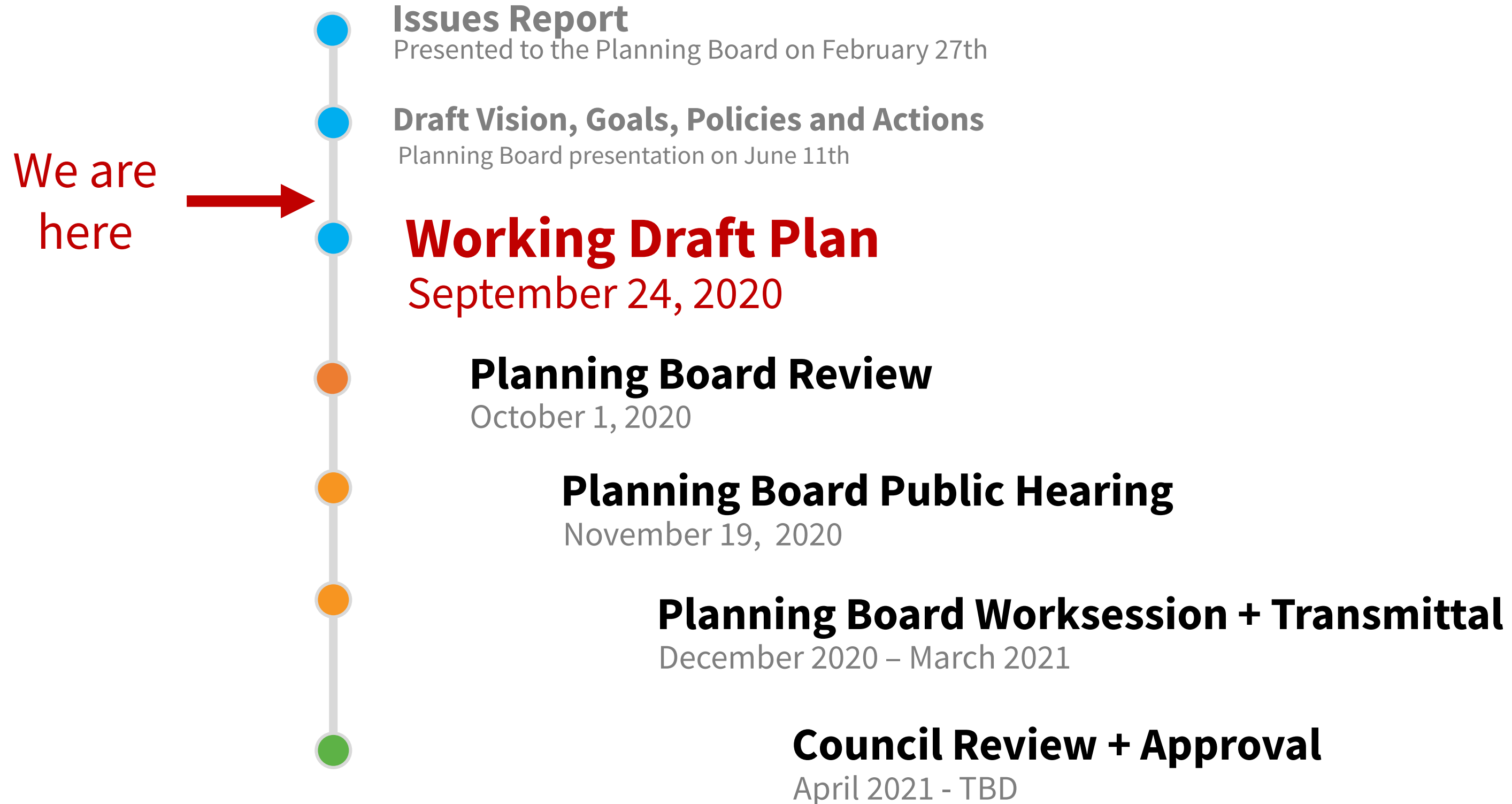
Key Themes

1. Complete Communities through compact form of development and urbanism
2. Corridors are the place for new growth
3. Start planning for people instead of planning for cars
4. Eradicate greenhouse gas emissions
5. Attainable housing for all income levels
6. Evolution of single-family neighborhoods near transit
7. Racial justice and equity
8. Great design and the importance of place
9. Regional solutions and strategies

A Guidebook, Not a Road Map

- Laying out where we want to go, and what we don't want to miss
- High level recommendations to establish where we want to be in 30 years
- Some Action items – “how to get there” – but not the complete route and itinerary

Next Steps



Questions/Comments

www.thrivemontgomery.com