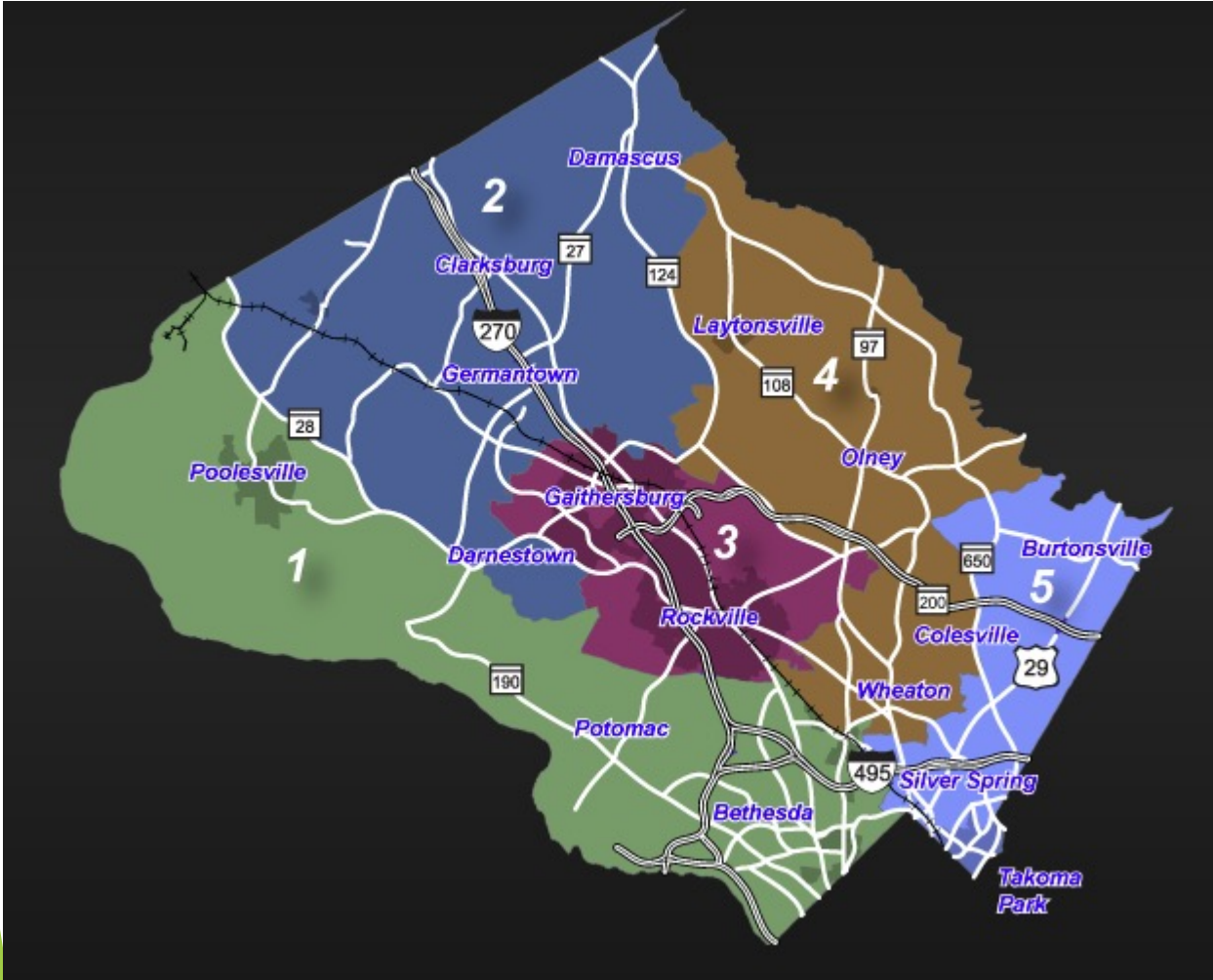


# Montgomery County Redistricting Commission

The process to map new Council districts for future Council elections

# Why is a new map of Council districts needed?



- ▶ Beginning in 2022, the number of Council districts will increase from 5 districts to 7 districts
- ▶ The new districts must be drawn based the current (2020) population
- ▶ The Council Charter (the County's Constitution) requires redistricting every 10 year...the last redistricting was approved in 2011

# What is the Commission's mission

- ▶ Recommend to the Council the adoption of a map of 7 Council Districts from which voters in those district will have the opportunity to cast ballots for one District Councilmember and 4 at-large Councilmembers. The Commission must report to the Council by November 15, 2021.
- ▶ The Districts must be substantially equal in population...approximately 150,000 residents in each districts
- ▶ Districts should be compact and contiguous ... a district may not be composed of “islands” of land area.

Ethnic and racial groups must be identified to avoid diminishing their voting rights by either packing those populations in a single district or splitting those populations in a manner that dilutes their impact on elections

# Commission “Ground Rules” for Mapping

- ▶ **Equal Population:** Equal Protection Clause of the Fourteenth Amendment requires that the legislative districts across states be equal in population.
- ▶ **Compactness:** Having the minimum distance between all the parts of a constituency (a circle, square or a hexagon is the most compact district).
- ▶ **Contiguity:** All parts of a district being connected at some point with the rest of the district.
- ▶ **Minority Representation:** Consideration of areas of population with majority of minorities.
- ▶ **Preservation of Counties and other Political Subdivisions:** This refers to not crossing county, city, or town, boundaries when drawing districts.
- ▶ **Preservation of Communities of Interest:** Geographical areas, such as neighborhoods of a city or regions of a state, where the residents have common political interests that do not necessarily coincide with the boundaries of a political subdivision, such as a city or county.

- ▶ The Planning Department has received the 2020 census data from the State.
- ▶ Planning staff expect to have the mapping tool for Commissioners updated with the 2020 census data ready for use by Commissioner's on September 15<sup>th</sup>. The Commissioners will then start the map drawing process.

## **For the Public – the Census Bureau Announces Release Date for Easier-to-Use Formats for Redistricting Data**

- ▶ The U.S. Census Bureau will release easier-to-use formats of the [2020 Census Redistricting Data \(Public Law 94-171\) Summary File on September 16](#).
- ▶ Also on September 16, redistricting data will be available through the Census Bureau's primary data dissemination tool, [data.census.gov](https://data.census.gov). The Census Bureau will also deliver an easy-to-use toolkit of DVDs and flash drives to state officials and public bodies responsible for their state's legislative apportionment or districting.
- ▶ These data — first [released August 12](#) — are currently available in a legacy format on the Census Bureau's FTP site. These data are also available through various [data visualizations](#).

# How can you help?

- ▶ What communities should be located in a single district?
- ▶ What communities should be in separate districts?
- ▶ Are there boundaries between district that you would recommend?

## Information on Commission:

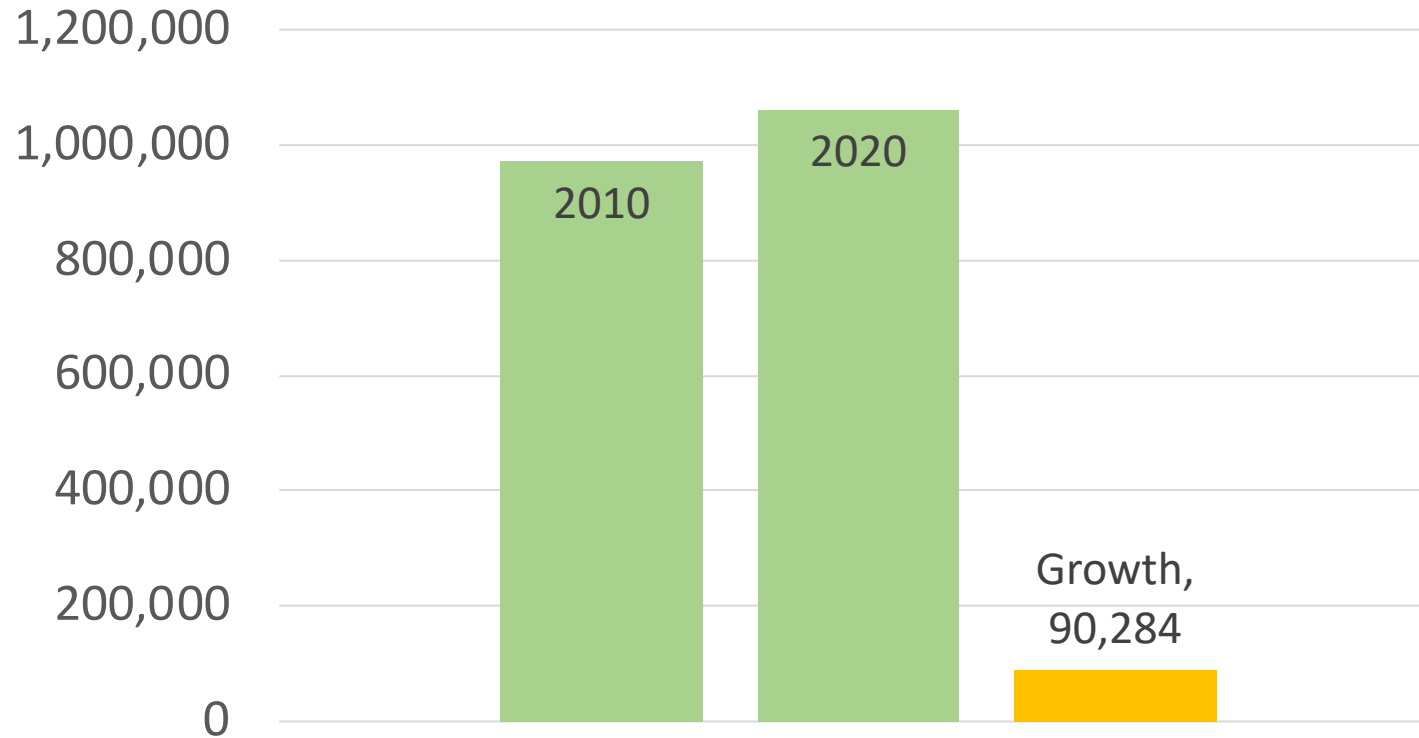
- ▶ The Redistricting Commission will meet September 23 and every Wednesday in October at 5:00pm.
- ▶ Meetings are Livestreamed on the Council FaceBook page (you do not need a FaceBook account to view)
- ▶ Redistricting Commission webpage for meeting notice, agenda and minutes can be found at:  
<https://www.montgomerycountymd.gov/COUNCIL/BCC/redistricting/index.html>

# Resource Slides



# Population Growth

2010-2020

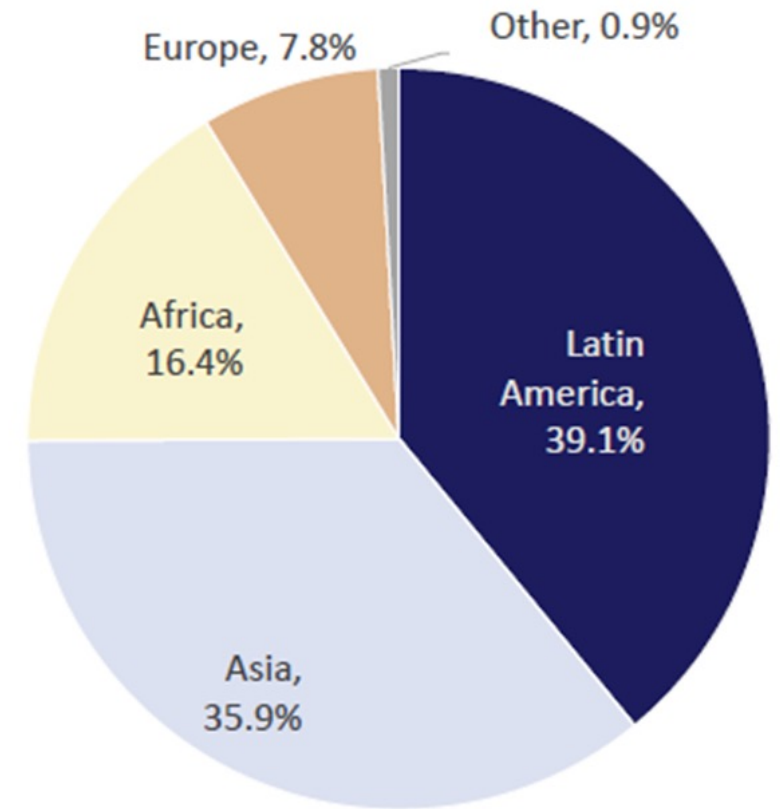


2000-2020 Census, US Census Bureau and Montgomery Planning Research & Strategic Projects Division

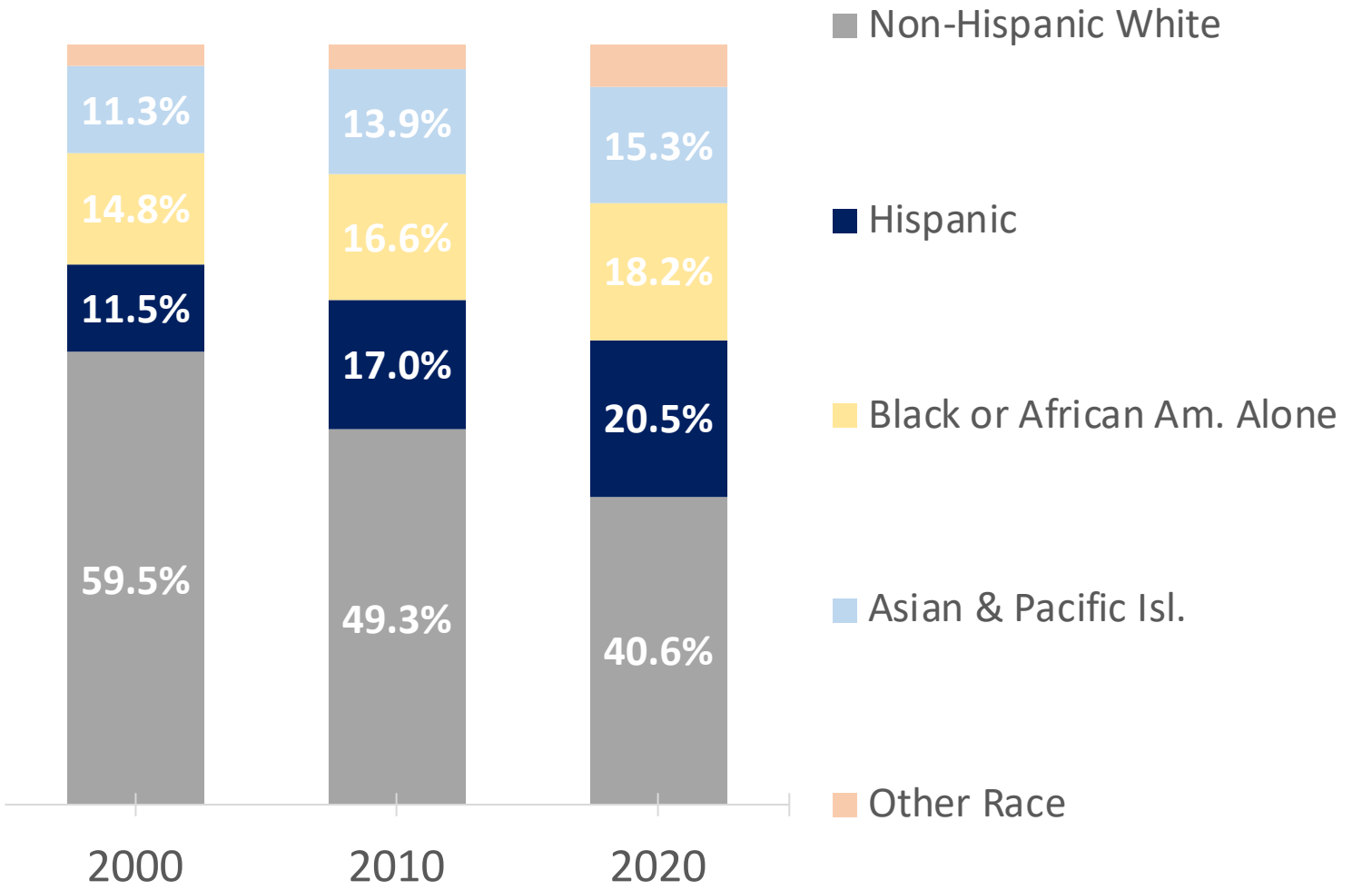
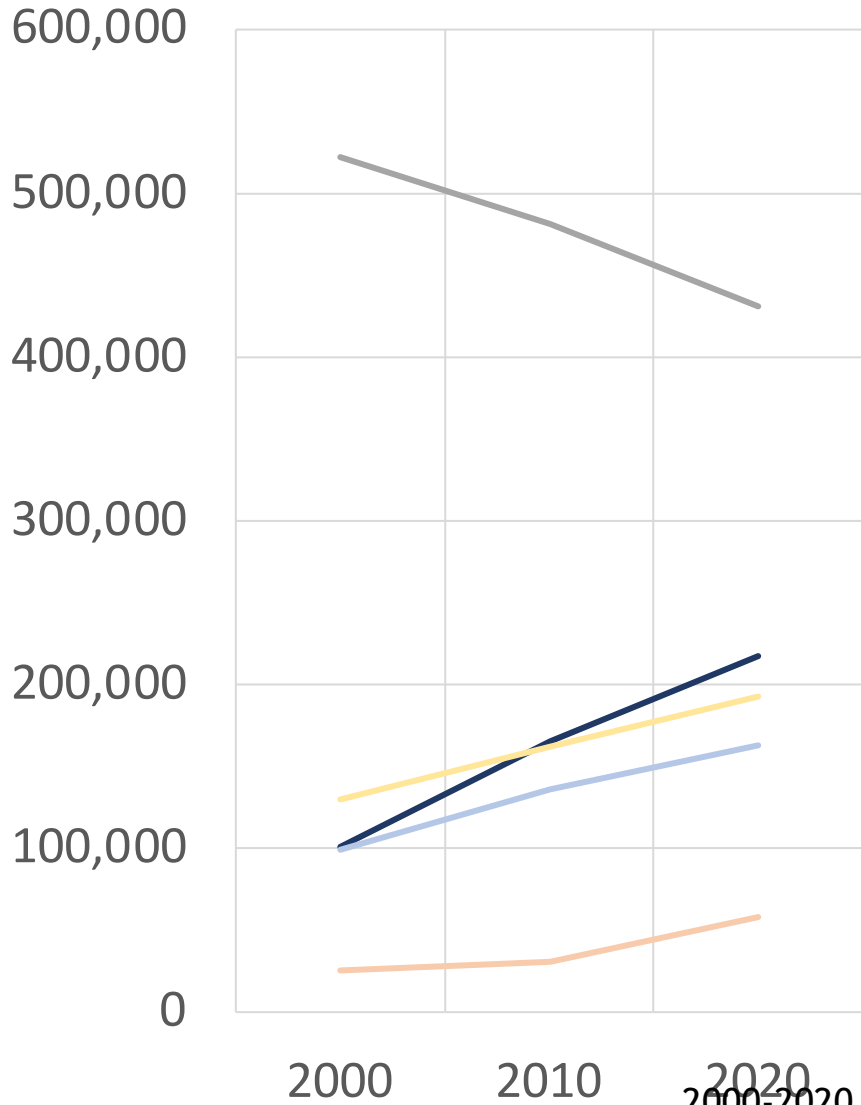


# Top Regions and Countries of Origin

Country of Origin	
El Salvador	12.9%
India	7.9%
China, excluding Hong Kong and Taiwan	6.7%
Ethiopia	5.2%
Guatemala	4.7%
Peru	3.9%
Philippines	3.0%
Vietnam	2.9%
Korea	2.9%
Honduras	2.4%

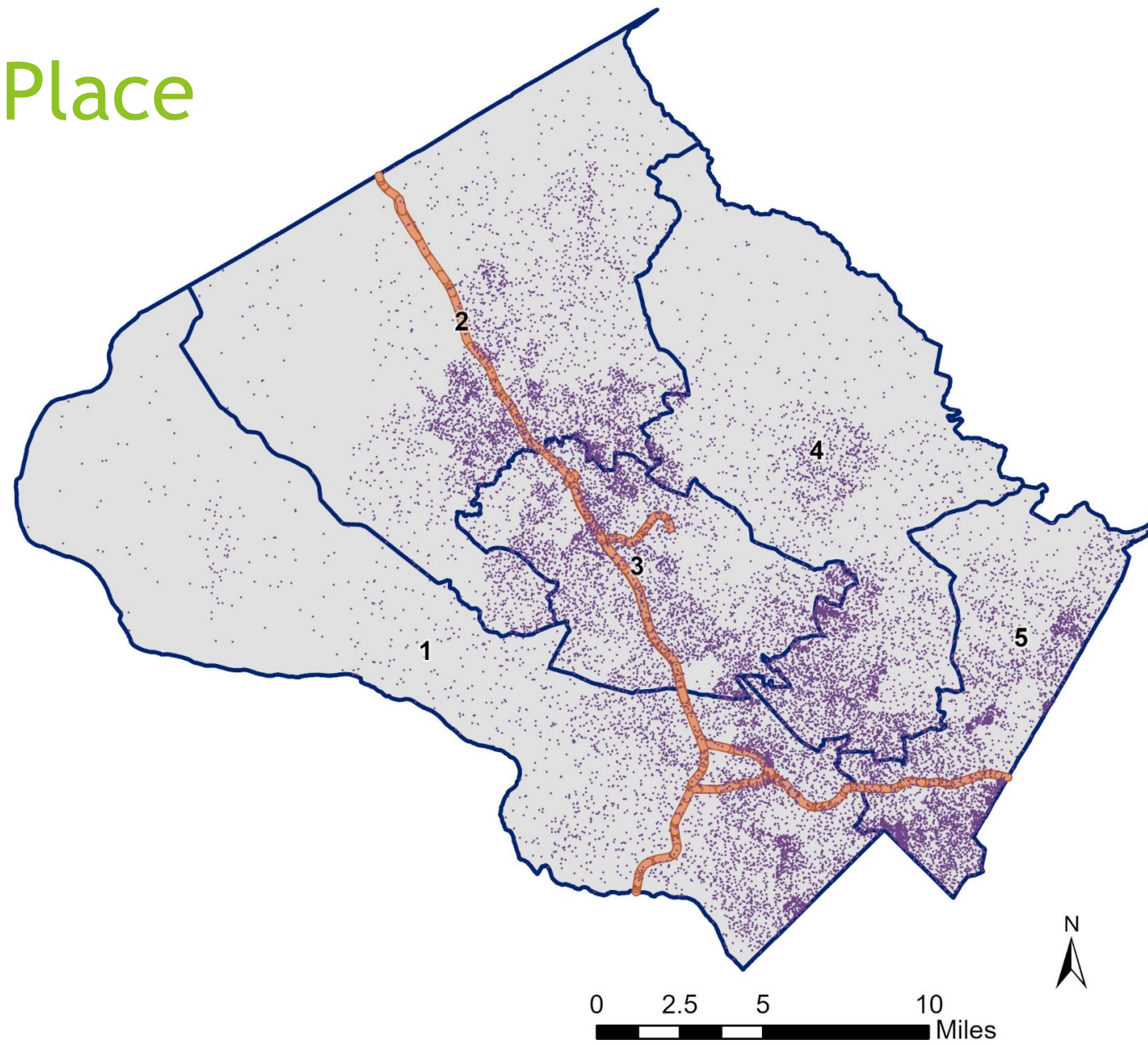


Source: 2019 American Community Survey, 1-year estimate, U.S. Census Bureau



2000-2020 Census, US Census Bureau and Montgomery Planning Research & Strategic Projects Division

# Population by Place

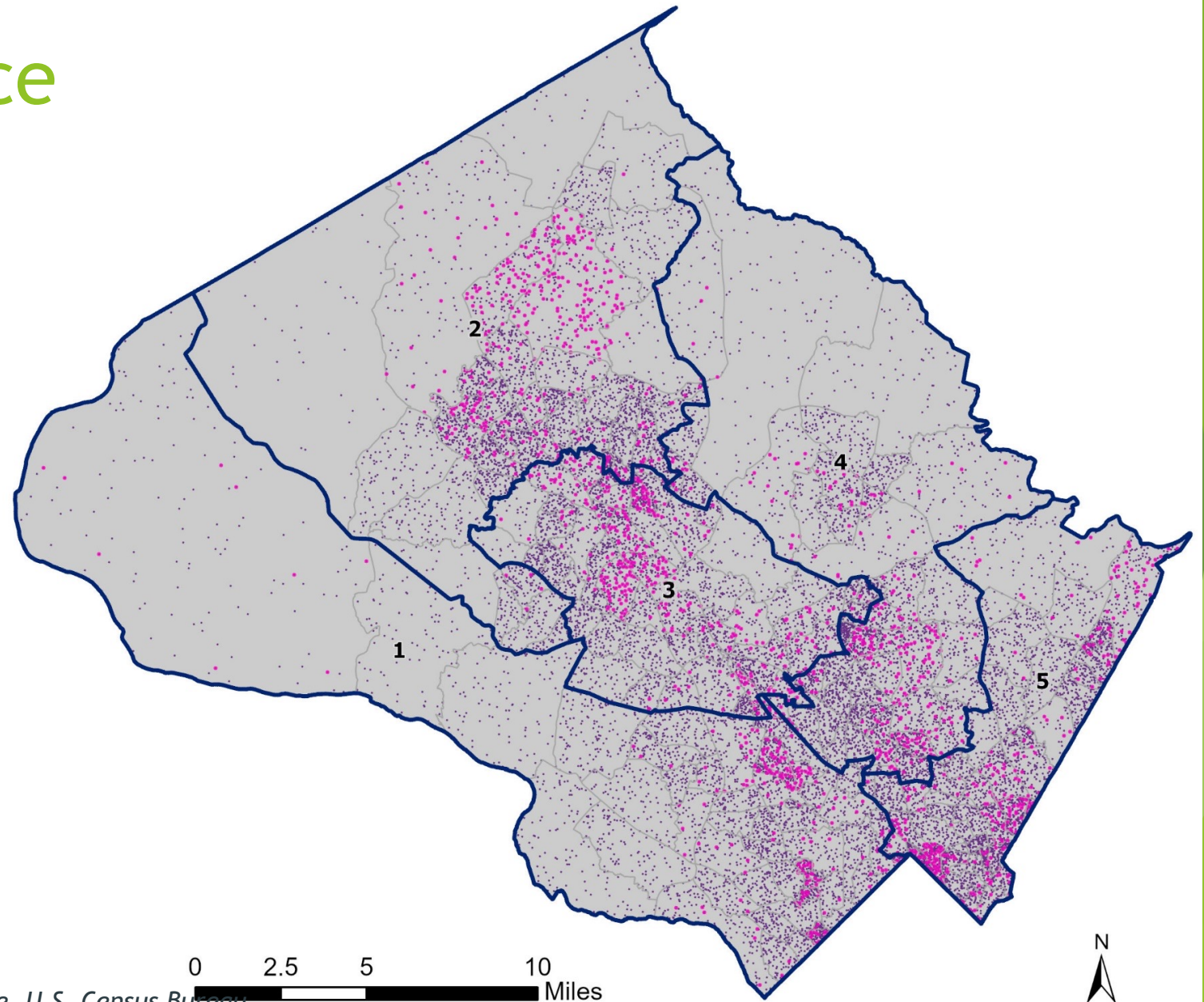


Source: 2019 American Community Survey, 5-year estimate, U.S. Census Bureau



# Growth by Place

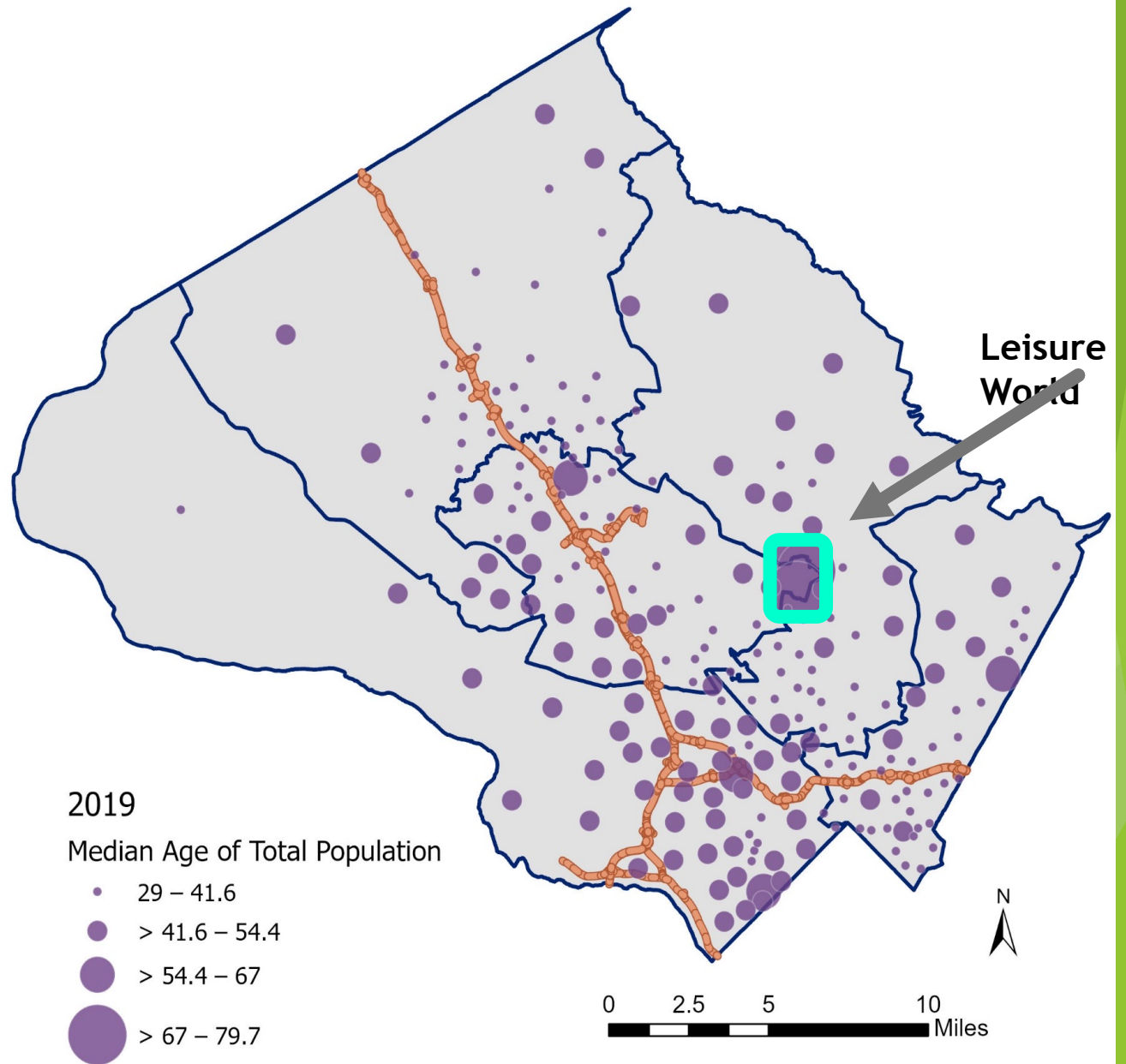
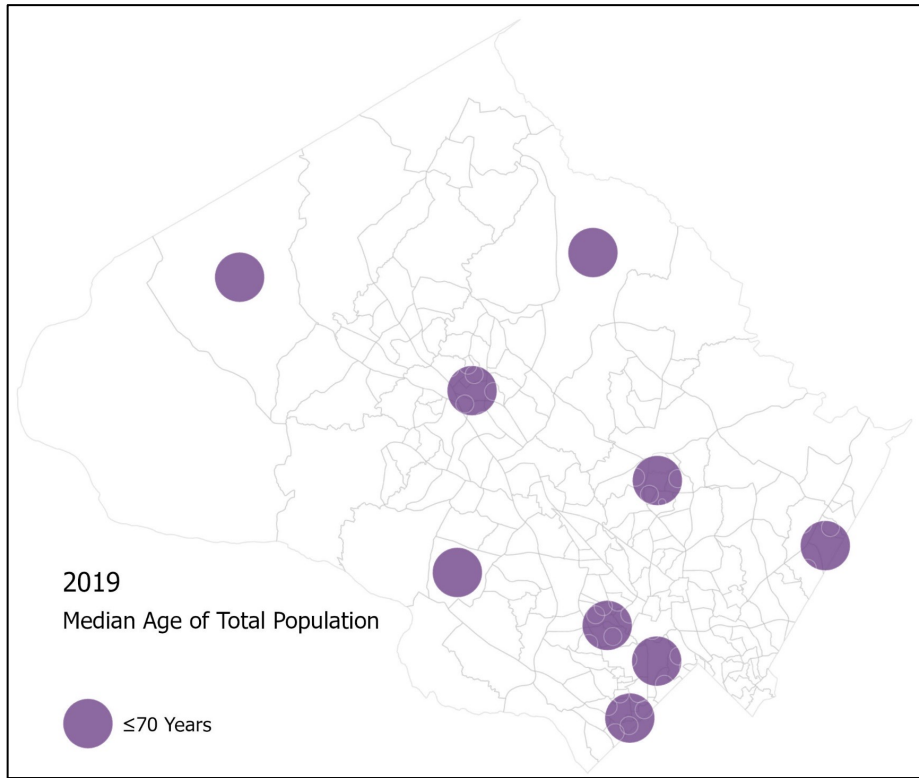
2010 - 2019 Clusters of Growth



Source: 2019 American Community Survey, 5-year estimate, U.S. Census Bureau

# Median Age by Place

Countywide Median Age: 39.2 Years



Source: 2019 American Community Survey, 5-year estimate, U.S. Census Bureau

# Montgomery County census tracts 1990-2019

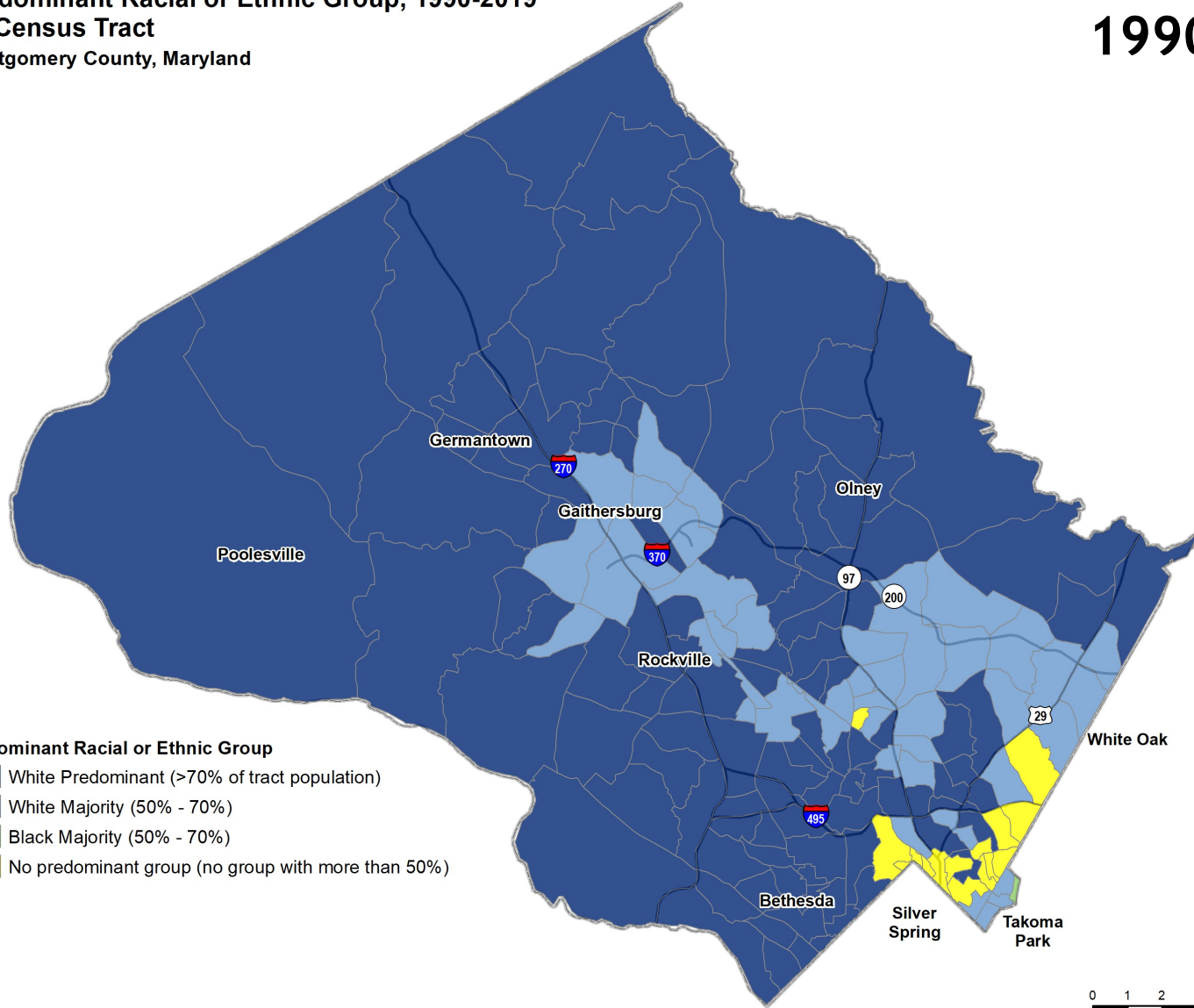
## ▶ Things to observe

- ▶ Tract sizes are different (larger = less populated)
- ▶ Whiter and less dense farther upcounty
- ▶ Less racial predominance downcounty, eastern, and along I-270 corridor
- ▶ Generally becoming more diverse (no racial predominance)
- ▶ Tracts becoming “Minority-majority”

**Predominant Racial or Ethnic Group, 1990-2019**  
**by Census Tract**  
 Montgomery County, Maryland

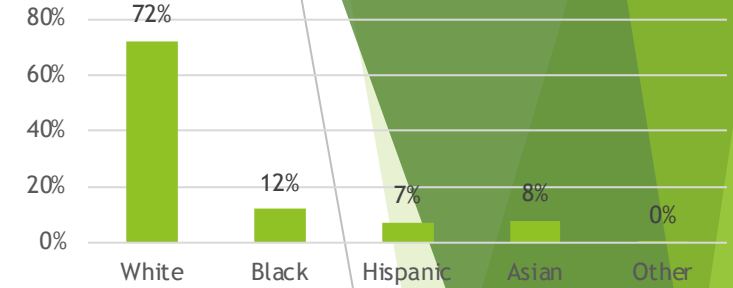
**1990**

- Predominant Racial or Ethnic Group**
- White Predominant (>70% of tract population)
  - White Majority (50% - 70%)
  - Black Majority (50% - 70%)
  - No predominant group (no group with more than 50%)

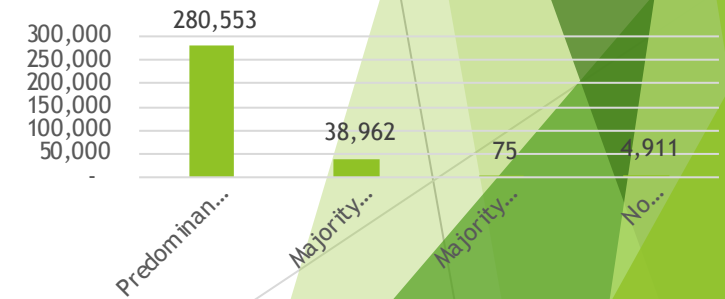


Source: 1990 US Decennial Census, U.S. Census Bureau. Created by: M-NCPPC, Research and Special Projects Division

**Population Distribution, by Census Tract**



**Census Tract Acreage, by Race**

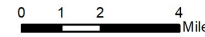
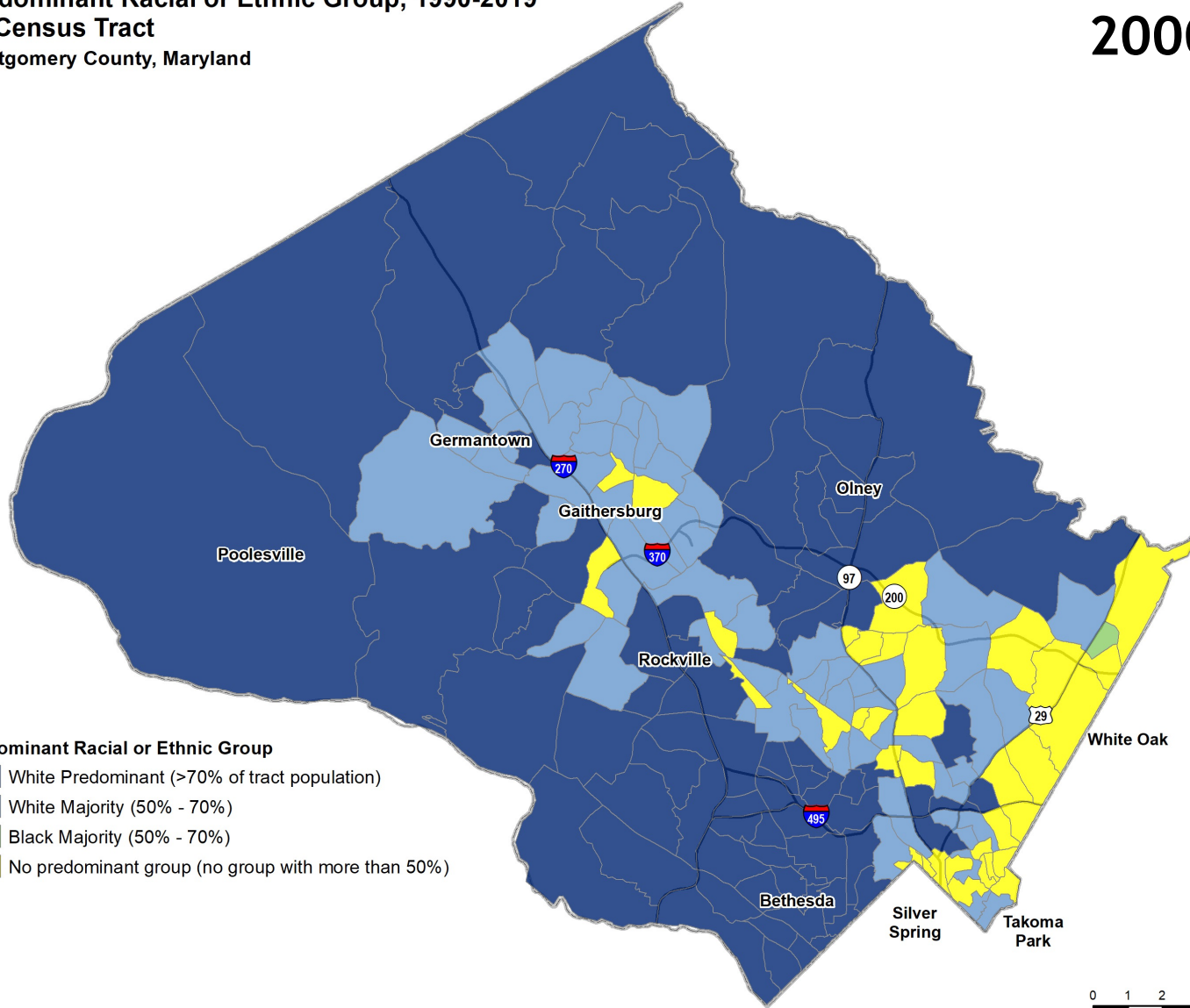




**Predominant Racial or Ethnic Group, 1990-2019**  
**by Census Tract**  
 Montgomery County, Maryland

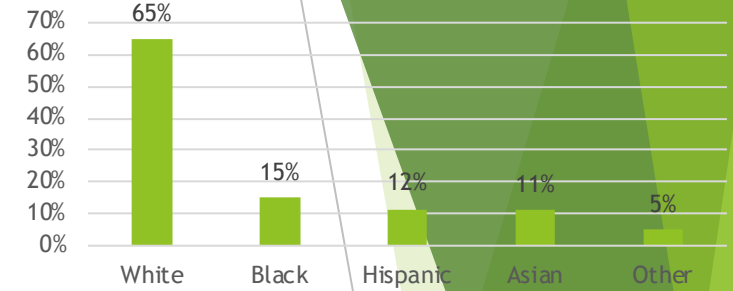
**2000**

- Predominant Racial or Ethnic Group**
- White Predominant (>70% of tract population)
  - White Majority (50% - 70%)
  - Black Majority (50% - 70%)
  - No predominant group (no group with more than 50%)

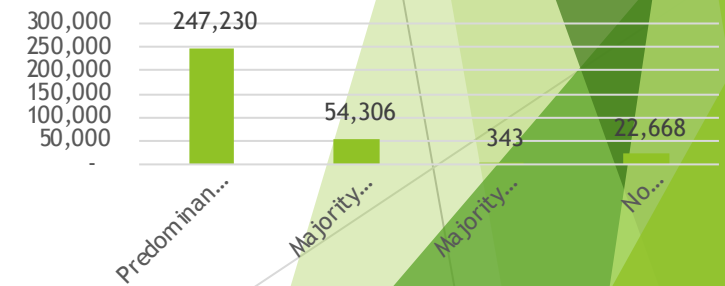


Source: 2000 US Decennial Census, U.S. Census Bureau. Created by: M-NCPPC, Research and Special Projects Division

**Population Distribution, by Census Tract**



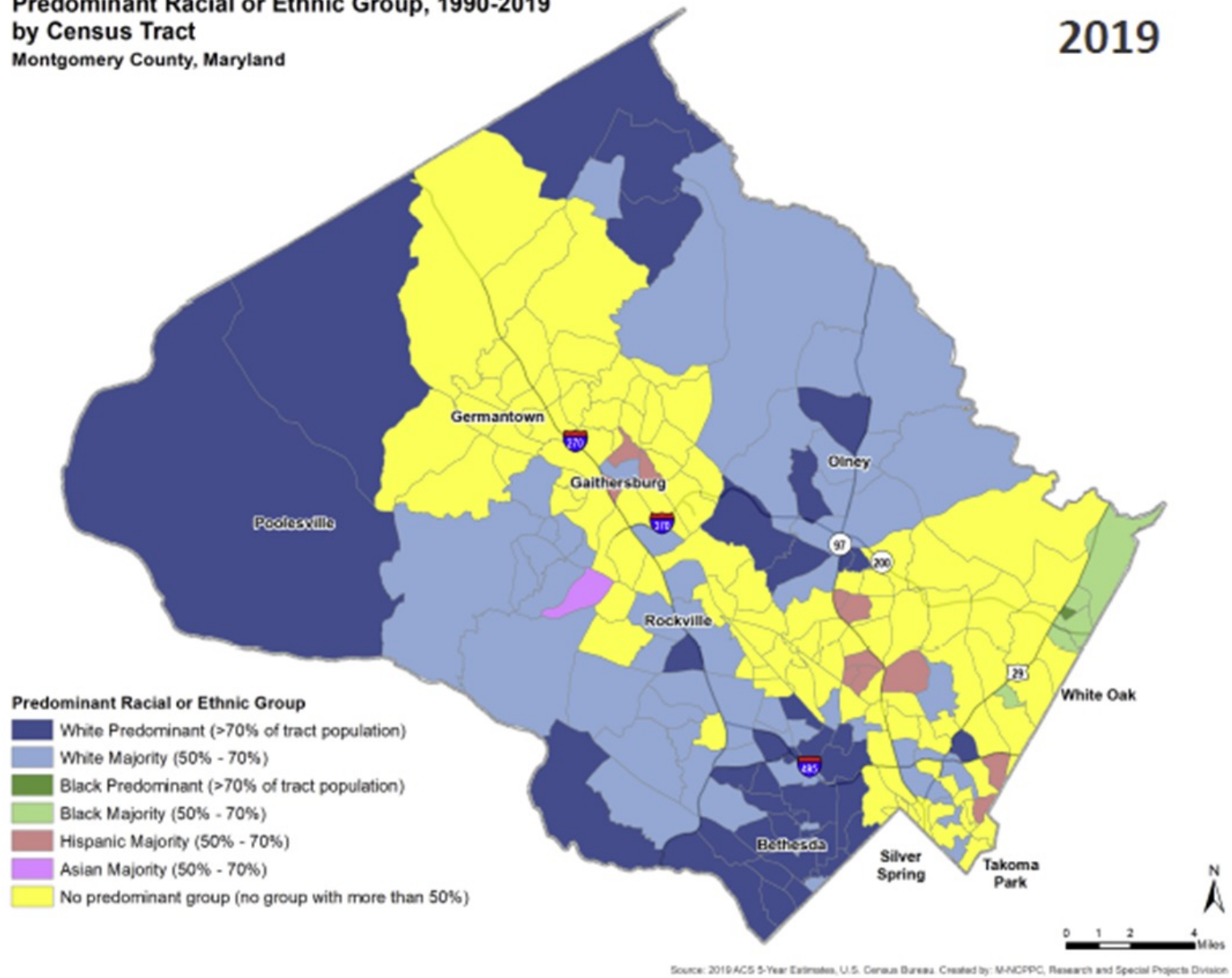
**Census Tract Acreage, by Race**



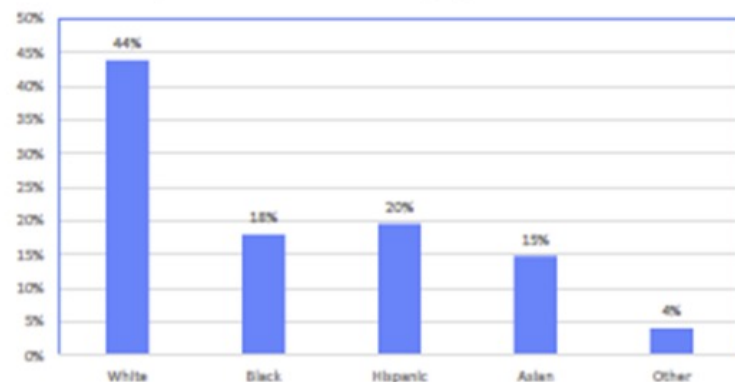


**Predominant Racial or Ethnic Group, 1990-2019  
by Census Tract**  
Montgomery County, Maryland

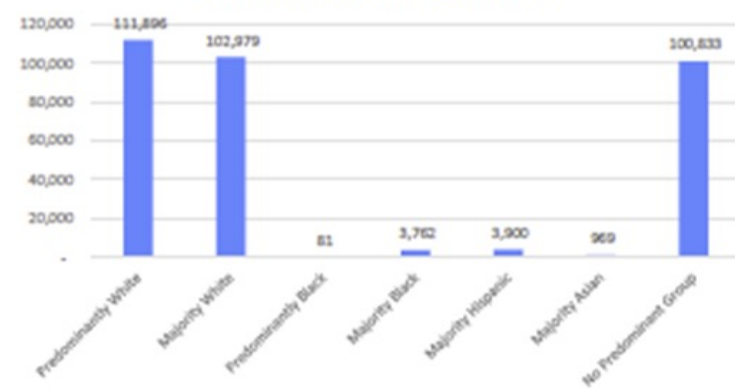
2019



Population Distribution, by Census Tract

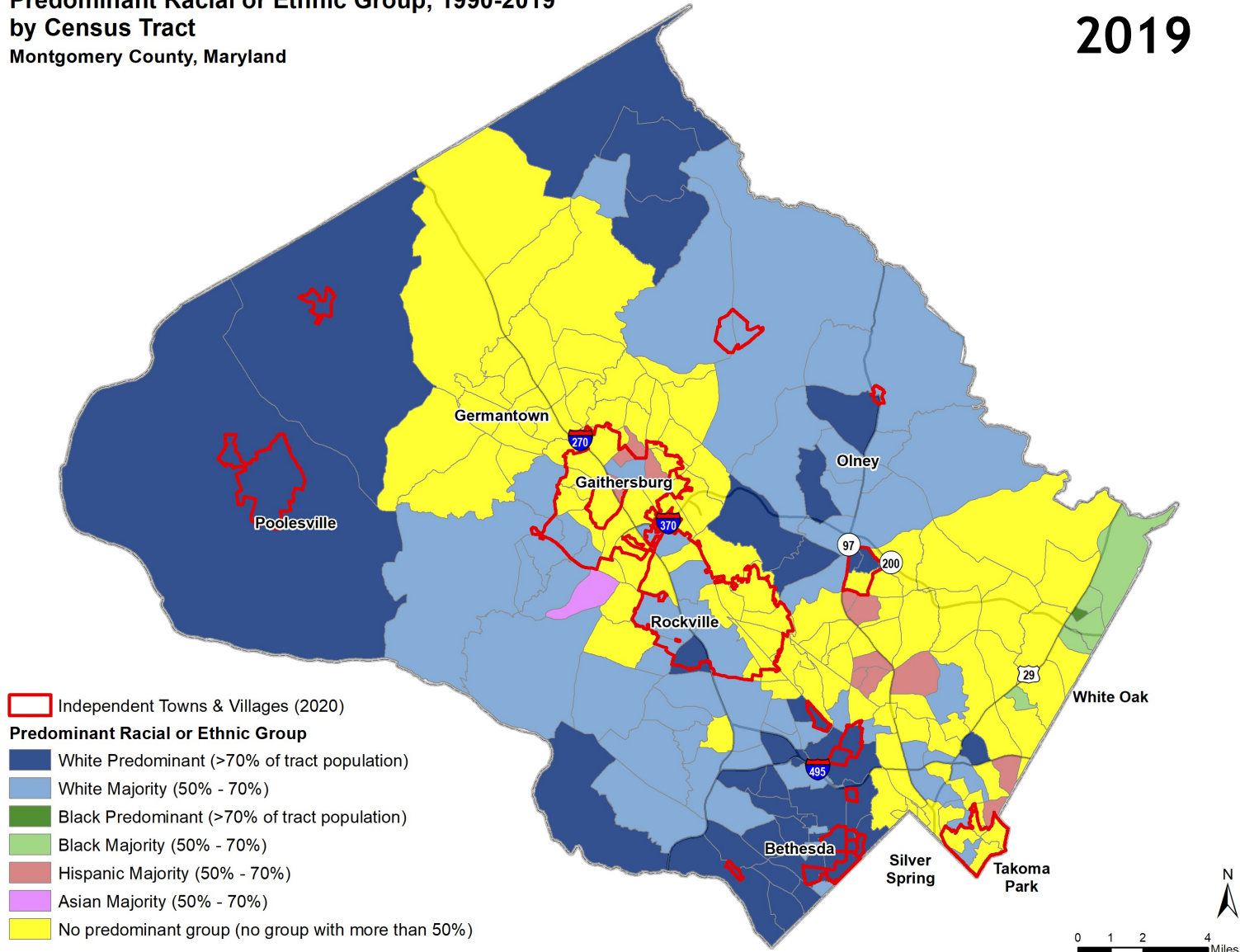


Census Tract Acreage, by Race



**Predominant Racial or Ethnic Group, 1990-2019**  
**by Census Tract**  
 Montgomery County, Maryland

**2019**



Independent Place	Racial Predominance	
	1990	2019
Barnesville town	WP	WP
<b>Brookeville town</b>	<b>WP</b>	<b>WM</b>
Chevy Chase town	WP	WP
Chevy Chase Section Five village	WP	WP
Chevy Chase Section Three village	WP	WP
Chevy Chase View town	WP	WP
Chevy Chase Village town	WP	WP
<b>Gaithersburg city</b>	<b>WM</b>	<b>NP</b>
Garrett Park town	WP	WP
Glen Echo town	WP	WP
Kensington town	WP	WP
<b>Laytonsville town</b>	<b>WP</b>	<b>WM</b>
<b>Leisure World</b>	<b>WP</b>	<b>WP/NP</b>
Martin's Additions village	WP	WP
North Chevy Chase village	WP	WP
Poolersville town	WP	WP
<b>Rockville city</b>	<b>WM</b>	<b>NP</b>
Somerset town	WP	WP
Takoma Park city	NP	NP

Source: 2019 ACS 5-Year Estimates, U.S. Census Bureau. Created by: M-NCPPC, Research and Special Projects Division



# Demographic Changes Summary

## *Age:*



Over 65 Population is up and rising



Under 5 Population is falling, as are birth rates



The younger population is more diverse

## *Race/Ethnicity:*

Increasing diversity but geographic segregation along racial lines

Income/Race are correlated and share a geographic pattern





# How can you help?

- ▶ What communities should be located in a single district?
- ▶ What communities should be in separate districts?
- ▶ Are there boundaries between district that you would recommend?

## Information on Commission:

- ▶ The Redistricting Commission's next meeting is Thursday September 23d 5:00pm.
- ▶ Meetings are Livestreamed on the Council FaceBook page (you do not need a FaceBook account to view)
- ▶ Redistricting Commission webpage for meeting notice, agenda and minutes can be found at:  
<https://www.montgomerycountymd.gov/COUNCIL/BCC/redistricting/index.html>